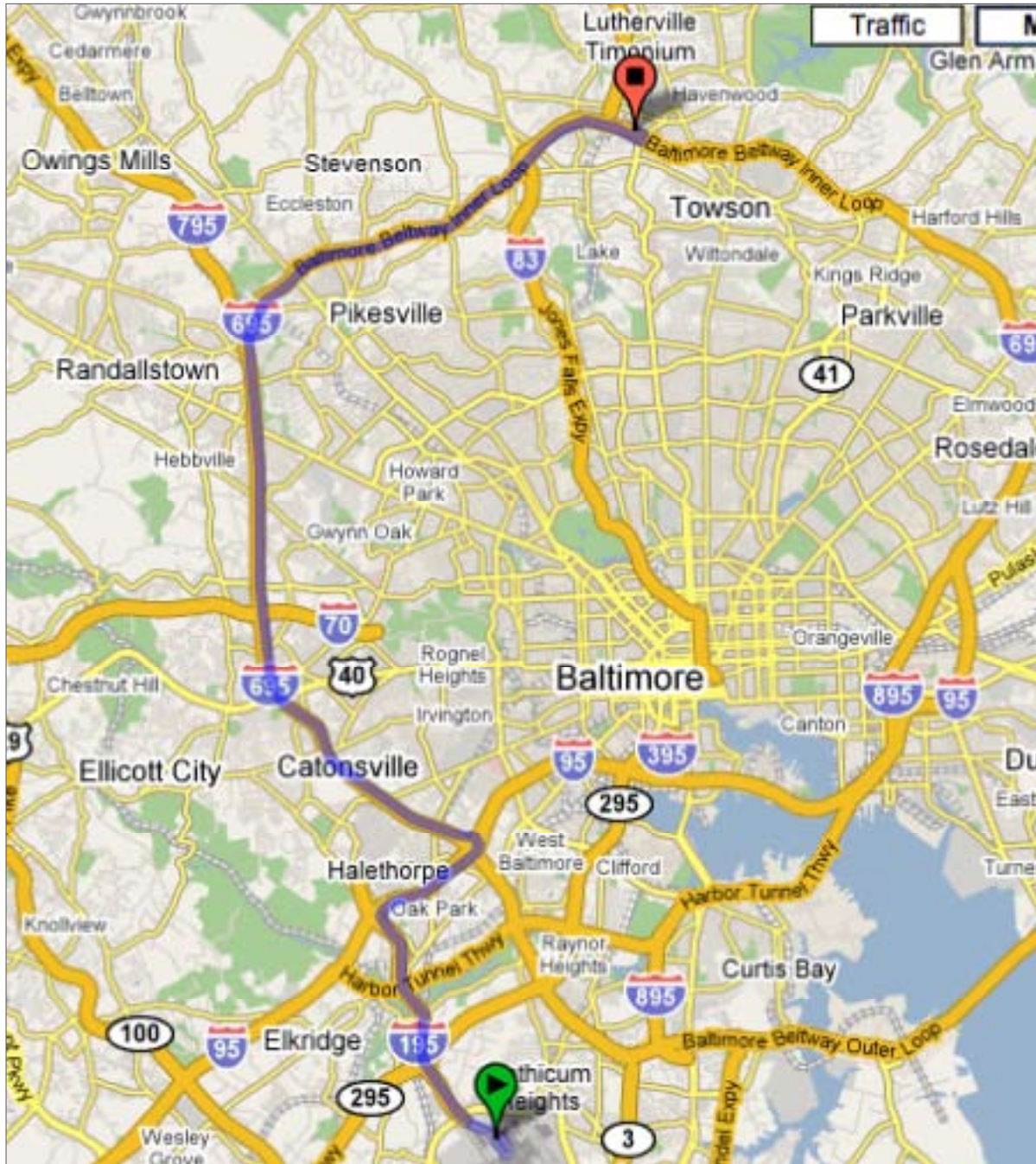


DIRECTIONS FROM BWI AIRPORT



cosmeticsurg • the science of beauty

- 1 Exit the airport
- 2 Slight **left** at **I-195 W** (signs for **Airport exit/I-195 W**). Stay on this for about 4.2 miles.
- 3 Take exit **4A** to merge onto **I-95 N** towards **I-695/Baltimore**. Stay on this for about 2.2 miles.
- 4 Take exit **49B** on the **left** to merge onto **Baltimore Beltway Inner Loop/I-695 N** towards **I-70/I-83/Towson**. Stay on this for about 17.5 miles.
- 5 Take exit **25** for **Charles St/MD-139 N**.
- 6 Once you approach the end of the exit ramp, merge into the **left lane** towards **N Charles St/MD-139 N** toward **Lutherville**. Turn left at the stoplight.



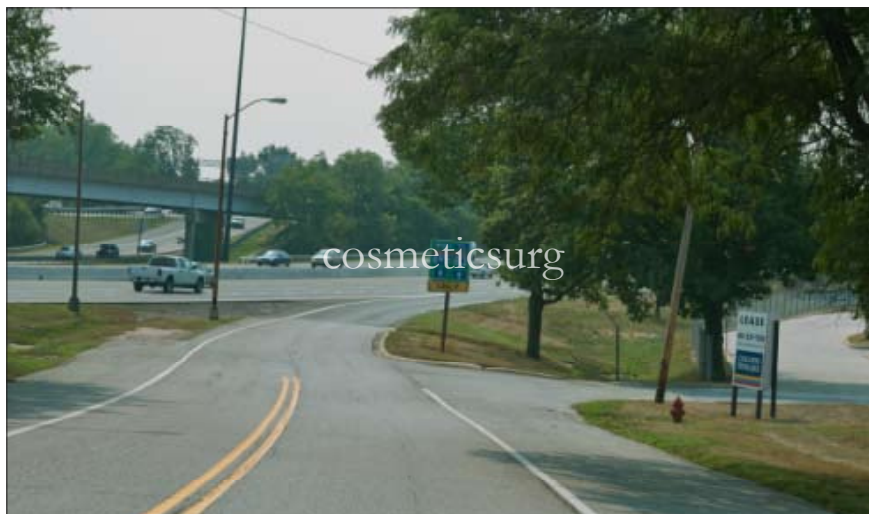
- 7 Stay in the left lane after you have turned left onto Charles Street. At this point you will approach a traffic circle. At the traffic circle, go around $3/4$ of the circle, and get off at the 3rd exit that is labeled **695 West to 83 North/ 1300 blk Bellona Avenue**.

cosmeticsurg • the science of beauty



- 8 Follow the sign pointing to **695 West to 83 North/ 1300 blk Bellona Avenue** and go straight down this ramp about 200 feet. Take a **RIGHT** at the **SECOND** entrance (which is marked by the red sign that says “Bellona Commons”). Be careful not to miss this turn, because doing so will put you back on the I-695 Beltway.

cosmeticsurg • the science of beauty



- 9 After turning right, you will take an **immediate left** to follow the road that runs along the silver fence for the distance of two buildings. Go straight until you see the 1300 building and the logo for CosmeticSurg. We are located next to “The Spine Center”. Parking is around the back of the building and the main entrance to the office is at the back of the building.